



Bayview Cottage
Llangennith | Swansea | SA3 1JE

Welcome to Bayview Cottage – a truly enchanting three-bedroom detached family home nestled in the heart of the stunning coastal village of Llangennith. Set against the breathtaking backdrop of North Gower, this substantial property is a rare gem that effortlessly combines timeless cottage charm with spacious, versatile living. Whether you're dreaming of serene coastal walks, vibrant village life, or simply a home brimming with character and warmth, Bayview Cottage offers it all – in one of the most desirable and picturesque settings the Gower Peninsula has to offer.

Llangennith is a truly magical place to live – a peaceful village set against the backdrop of rolling hills and the breathtaking coastline of North Gower. Best known for its world-class surfing beach at Rhossili Bay, Llangennith attracts those seeking a tranquil rural lifestyle without sacrificing access to stunning natural beauty. The village boasts a welcoming and active community, with a popular local pub – The King's Head Inn – offering a warm atmosphere and hearty fare. There's also a church, surf shop, and excellent walking and cycling routes right on the doorstep. Despite its rural charm, Llangennith remains accessible, with the nearby town of Swansea offering all major amenities, schools, shops, and transport links, just a short drive away.

Let's now take a look in more detail...

The Approach

After journeying along the scenic North Gower Road, you arrive at the picture-postcard village of Llangennith. As you crest the hill, you're greeted with a spectacular vista – it's simply breathtaking. Meandering through the charming village and passing the well-loved local pub, you reach a 5-bar wooden gate that invites you into the grounds of Bayview Cottage. A generous chip-stone driveway sweeps in front of the home, offering ample parking and guiding you into this enchanting property. Three steps lead up to the entrance hallway, setting the scene for the character and warmth found within.

Entrance Hallway

Stepping into the entrance hall, you are immediately struck by the warm and inviting atmosphere that radiates from this beautiful home. The space brims with charm and character, featuring exposed stone walls, rustic beams, and tiled flooring underfoot. A window offers a charming glimpse through to the kitchen area, and doors lead you through to both the kitchen/dining room and the lounge, enticing you to explore further.

Kitchen/Dining Room

This is a delightful cottage kitchen, full of charm and functionality. Natural light floods the space from dual-aspect windows and an overhead Velux, enhancing the rustic feel created by the exposed beams and tiled flooring. The kitchen is fitted with a range of wall and base units, a double stainless steel sink with drainage and a swan-neck tap, a Zanussi oven/grill and 4-ring electric hob, and an elevated extractor fan. A centre island adds practicality, while there is ample space to house a generous dining table. From here, there's access to the rear garden, the utility room, and a ladder stairway leading to a versatile attic room.

Utility Room

Just off the kitchen is a practical utility room. This useful space features additional wall and base units, a single stainless steel sink, a window to the side, tiled flooring, and space for two under-counter appliances as well as one freestanding.





Lounge

Step up via a slate step into the lounge – a spacious, character-filled room that forms the heart of this wonderful home. The focal point is the cosy wood burner, set within an exposed stone surround, oak mantel, and slate hearth. The room is full of charming features including exposed beams, new flooring, a feature panel wall, and an exposed brick wall. Dual-aspect windows bring in the light and offer a sea outlook in the distance to the front, while a door leads out onto the raised patio. From the lounge, you also access an inner hallway leading to a ground-floor shower room and the peaceful sunroom, as well as a staircase nestled in the corner that guides you to the first floor.

Inner Hallway

The inner hallway continues the theme of charm and practicality with its new flooring and twin double-door storage cupboards. A window to the rear brings in light, and there is access to the shower room and the sunroom beyond.

Ground Floor Shower Room

This useful ground-floor shower room features a WC, Bosch wash basin, and a shower. Here you also have partially tiled walls, tiled flooring and a frosted rear window.





Sunroom

The sunroom is a truly beautiful and tranquil space. Natural light beams in through two feature side windows and bi-fold doors to the front, offering stunning views of the garden and distant sea. With new flooring underfoot and vaulted ceilings featuring exposed beams above, it's the perfect place to unwind and relax after a long day.

First Floor Landing

Ascend the bright, carpeted stairway with its elegant iron balustrade to the first floor. Natural light floods the staircase thanks to two rear windows and an additional picture window to the side. At the top, you arrive at a carpeted landing that provides access to three bedrooms, the family bathroom, and a useful storage cupboard with fitted shelving.

Bedroom One

First on your right is bedroom one – a spacious double room that exudes cottage charm. Two front-facing windows perfectly frame the sea views in the distance, and the space is finished with carpeted flooring, built-in wardrobes with hanging rails and shelving, and feature exposed stone walls.

Bedroom Two

Also located to the front of the home, bedroom two enjoys beautiful sea views. This double room continues the theme of character with exposed stone walls, carpeting, and built-in wardrobes with practical storage.

Bedroom Three

Bedroom three is a bright and welcoming space, with dual-aspect windows drawing in plenty of natural light. This is another double room, finished with soft carpeting underfoot.

Family Bathroom

The family bathroom offers a WC, wash basin, and a fitted bath with shower over. With vinyl flooring, partially tiled walls, and a frosted window to the rear.

Versatile Attic Room

Returning to the kitchen/dining room, ascend the charming ladder-style stairway found in the dining area to reach the versatile attic room. This is a unique and private space – a room that enjoys sea views through its front-facing window. Vaulted ceilings and an exposed stone wall add to the appeal, along with wooden flooring and an additional space with a hanging rail.





Step Outside...

Bayview Cottage is set within a lovely, well-maintained plot. The chip-stone driveway sweeps across the front of the property, offering parking for multiple vehicles. A raised patio area to the front makes a perfect space for al fresco dining or simply enjoying the tranquil surroundings. The boundaries are defined with a mix of fencing, walls, and mature shrubs and trees. You'll also find a level lawn, a further chip-stone area, and a paved path guiding you around the home – all beautifully presented.

Detached Double Garage

This fantastic home also benefits from a detached Double garage, complete with an up-and-over door. It's an ideal space for storage, garden equipment, or even as a workshop for hobbies or home projects.

Local Area

Llangennith is a gem on the Gower Peninsula – an Area of Outstanding Natural Beauty famed for its unspoilt beaches, dramatic cliffs, and rolling countryside. A haven for walkers, surfers, and nature lovers, the area is most renowned for its proximity to Rhossili Bay – consistently ranked among the UK's best beaches. The village itself is home to a welcoming community, with a popular local pub, The King's Head, serving locals and visitors alike. There are local shops, cafes, and surf outlets, as well as churches and community events that bring residents together. For families, nearby villages offer primary schooling options, while the city of Swansea – just under 40 minutes' drive away – provides a full range of secondary schools, colleges, shops, restaurants, entertainment, and healthcare facilities. Swansea also serves as a major transport hub, with regular train and bus services, and excellent road links to the M4 corridor and beyond. Whether you're looking for a peaceful lifestyle, coastal adventures, or convenient access to modern amenities, Llangennith offers the very best of all worlds.



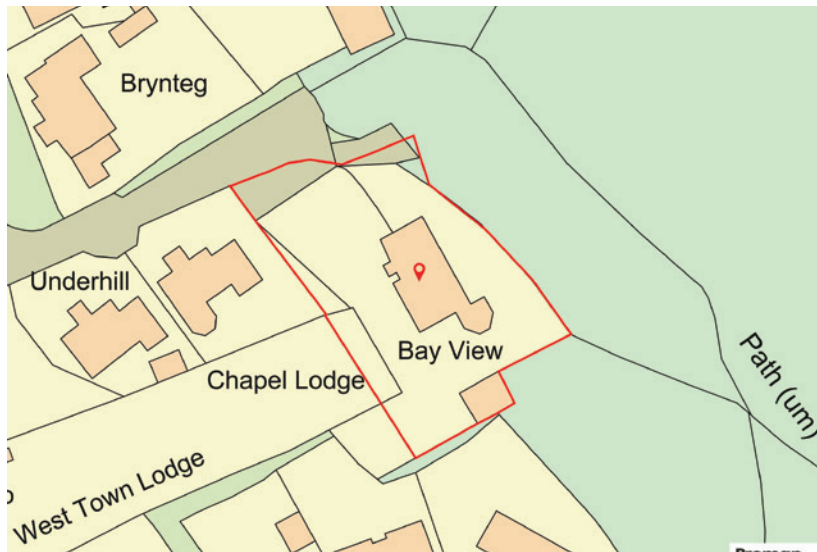
Additional Property Information

Freehold
Tax Band - G
Electric
Mains Water
Mains Drainage
Conservation Area
Broadband Available

For mobile coverage please visit <https://checker.ofcom.org.uk>

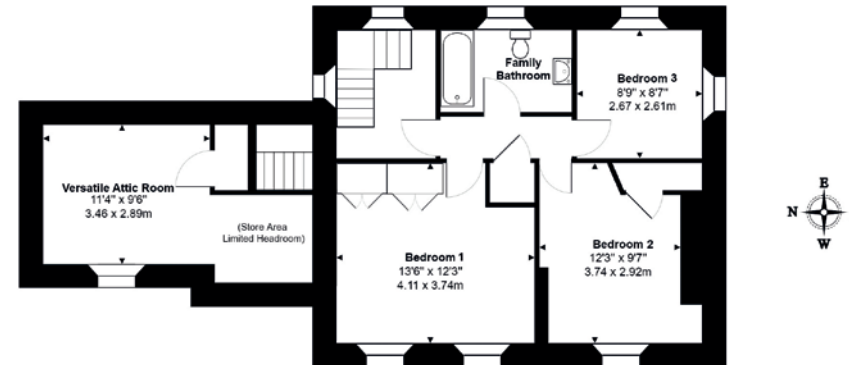
Score	Energy rating	Current	Potential
92+	A		96 A
81-91	B		
69-80	C		
55-68	D		
39-54	E	44 E	
21-38	F		
1-20	G		

Asking price £650,000

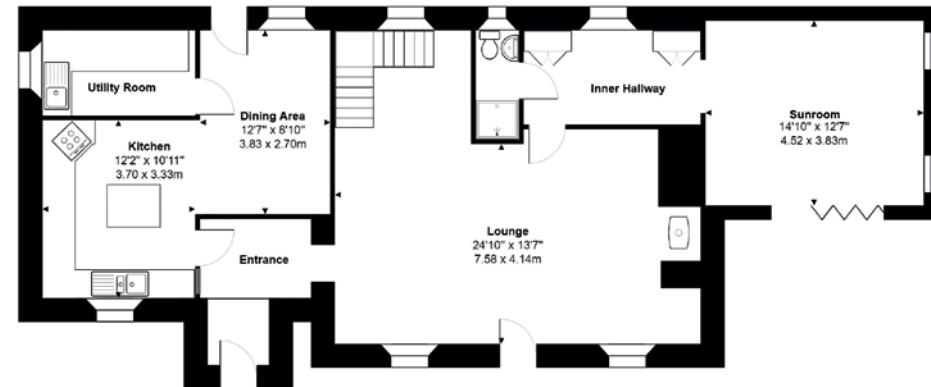


Bay View Cottage Llangennith

Approximate Total Area: 1787 ft² ... 166.0 m²



First Floor



Ground Floor

All measurements are approximate and for identification purposes only.
We have made every effort to ensure that measurements and details are accurate.
However, they are only an approximate general guide and the property details
cannot be guaranteed for accuracy, as such, they should be checked before any contract or purchase.
© Seipac 2025



Agents notes: All measurements are approximate and for general guidance only and whilst every attempt has been made to ensure accuracy, they must not be relied on. The fixtures, fittings and appliances referred to have not been tested and therefore no guarantee can be given that they are in working order. Internal photographs are reproduced for general information and it must not be inferred that any item shown is included with the property. For a free valuation, contact the numbers listed on the brochure. Copyright © 2025 Fine & Country Ltd. Registered in England and Wales. Company No: NLK 11004316. Registered Office Address: 11 WALTER ROAD, SWANSEA, SA1 5NF, UNITED KINGDOM. Printed 23.07.2025



Fine & Country
Tel: +44 (0)1792 367301
swansea@fineandcountry.com
77 Newton Road, Mumbles SA3 4BN

